



School of Engineering and Computing

Introduction to Database Development

Level: 1

Module Code: M1G505190

Coursework 1

To be completed in class time during week beginning 23rd November 2009

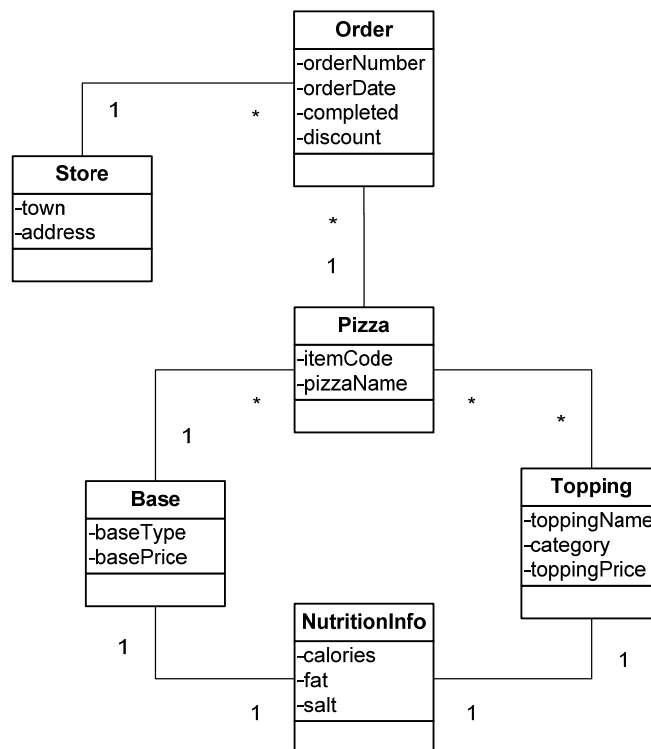
Time allowed: 1 hour

This coursework comprises 20% of the overall mark for the module.



Database schema for GCU Pizza

GCU Pizza need a new system to handle pizza orders. Some of the design work has been done, and there is a domain/data model, shown in the UML class diagram below. Note that, for simplicity, GCU Pizza does not allow extra toppings – there is a fixed menu of named pizzas, each with a specified list of toppings. Also, each order can include only one pizza.



Task: write out a summary database schema for a database to implement this data model

- You will need to make appropriate choices of **tables**, **fields** and **keys**.
- Tables may require fields in addition to those shown in the data model, for example primary key and foreign key fields
- You should list all tables and fields in the form:

TableName(primary key field(s), non key field(s), foreign key field(FK))

- You do **not** have to specify data types for fields.
- Please mark each foreign key field with (FK) as shown. There may be more than one foreign key field in some tables.

The mark for this task will be out of 20, with marks awarded proportionately for each table.

**M1G505190
Coursework**



Student name _____

Matriculation number _____

Group _____

Date _____

Write your answer here:

Total mark

**M1G505190
Coursework**



